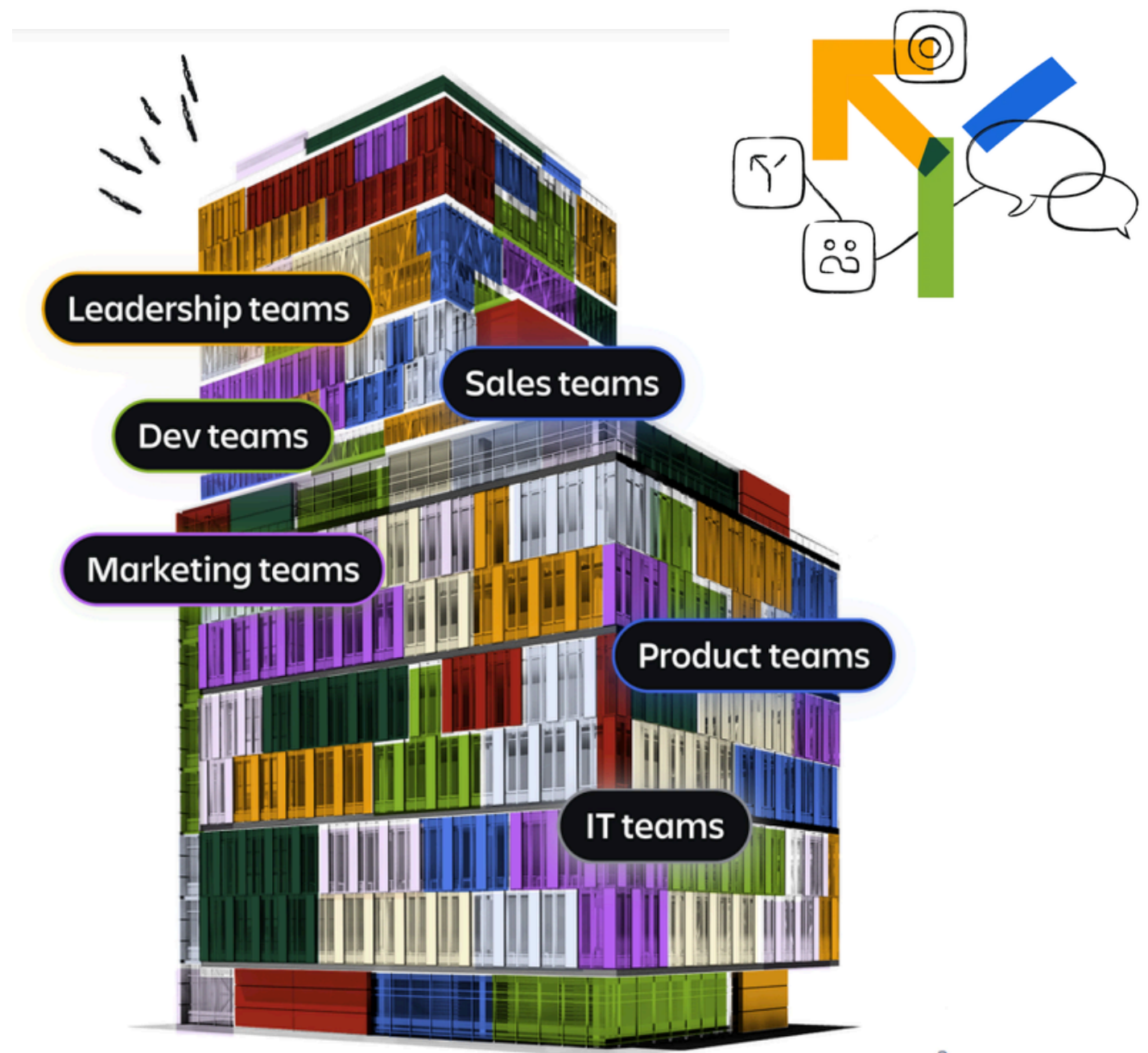


System of Work principles

- Align work to Goals
- Plan & track Work
- Unleash collective Knowledge



The New Rules of Teamwork:
A Guide to Atlassian's System of Work

Chapter 1:

Beyond Tools—Building a System of Work



Old Way:

Multiple disconnected tools; teams working in silos; manual reporting.



New Rule:

Create a connected, intelligent system where tools, data, people, and goals interact seamlessly.

The Atlassian System of Work includes:



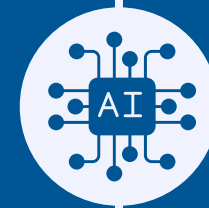
- **Alignment to Goals:** Every initiative, project, and task mapped to strategic priorities.



- **Shared Planning and Tracking:** Real-time coordination across all levels.



- **Knowledge at Your Fingertips:** Centralized, dynamic access to insights and documentation.

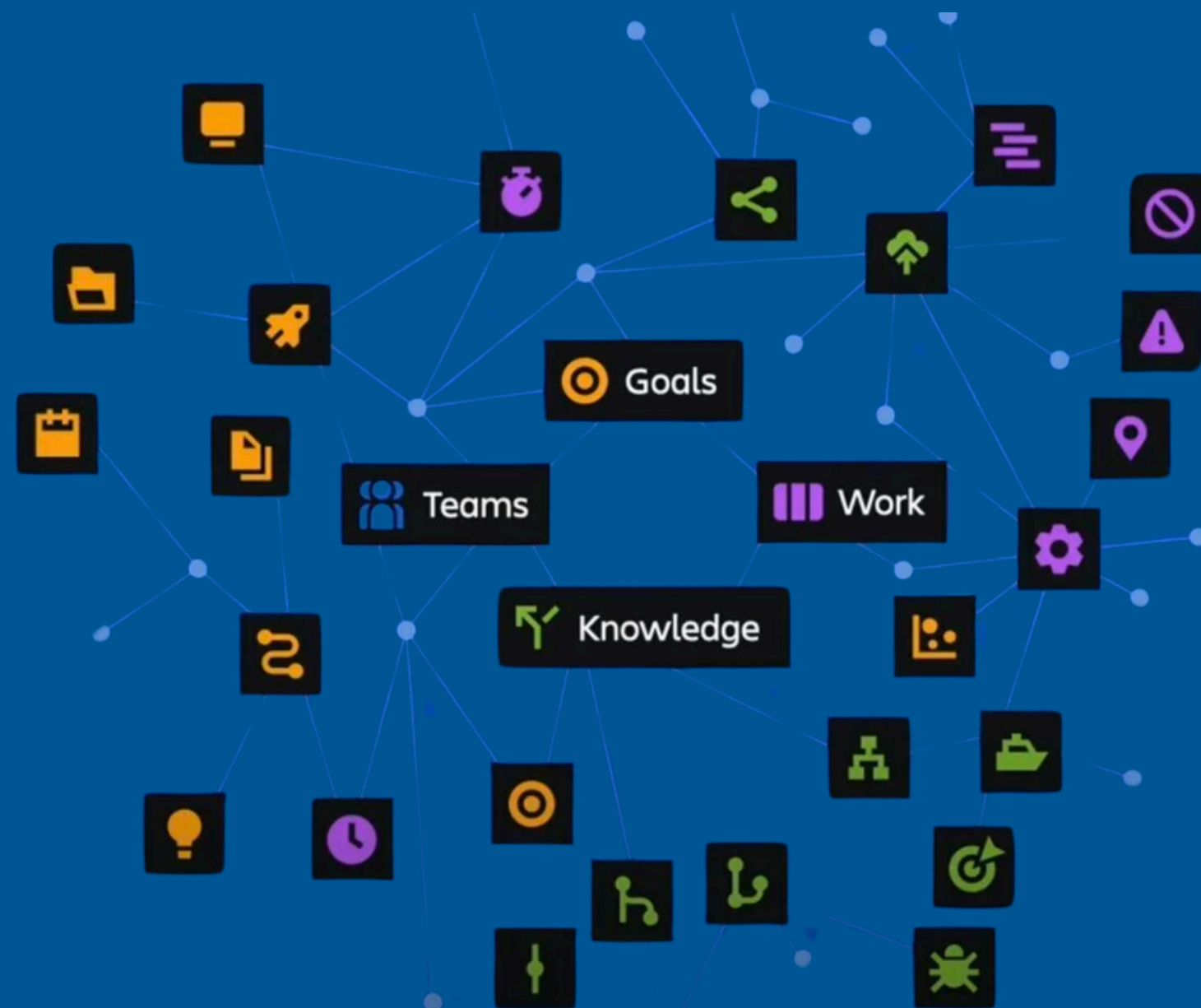


- **AI as a Teammate:** Rovo and intelligent agents reducing friction and accelerating execution.

Chapter 2:

Meet the Heart of the System—The Teamwork Graph

Imagine an intelligent map that understands how your people, work, knowledge, and goals connect. That's the **Teamwork Graph**, Atlassian's powerful data layer.



Teamwork Graph by the Numbers:

- 2.5x faster queries (2025)
- 13 billion+ data objects mapped
- 100+ pre-built app connectors
- Custom connector creation with Forge

Key Capabilities:

- Personalized work recommendations
- Richer AI-driven search results
- Live visualization of work item relationships in Jira

Chapter 3:

New Ways to Align, Plan, and Deliver

Old Way:

Strategy discussed once a year. Teams disconnected from big-picture goals.

New Rule:

Create living connections between leadership strategy and team execution.

How Atlassian tools bring this to life:

 **Focus**

Define and track OKRs, priorities, and funding initiatives.

 **Jira Align**

Break strategies into value streams, portfolios, and programs.

 **Jira**

Manage agile delivery with real-time visibility.

 **Atlas**

Communicate updates without meetings or slide decks.

A decorative graphic on the left side of the slide. It features a blue background with white and light blue geometric shapes. A prominent blue rounded square contains a white icon resembling a stylized 'D' or a document. Below it, a white rounded square contains a blue starburst icon. The overall design is modern and clean.

Chapter 4:

Empower Knowledge Workers with AI

Old Way: Wasting hours hunting for documents, chasing down updates, duplicating work.

New Rule: Treat AI as an integrated teammate—summarizing, suggesting, and guiding.

How Rovo Changes the Game:

- ✓ Enterprise-wide search across Atlassian + third-party apps
- ✓ AI-generated summaries and knowledge recommendations
- ✓ Automated task suggestions and ticket resolutions

Chapter 5:

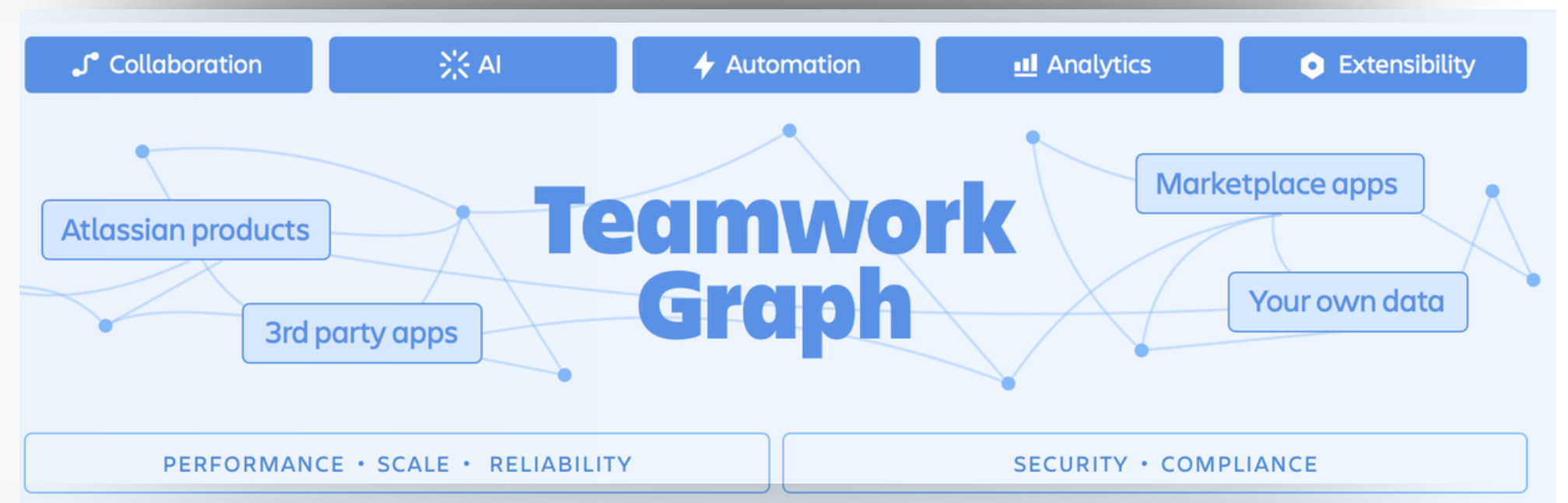
Meet the Heart of the System. —The Teamwork Graph

Old Way: IT as a ticket machine; slow, reactive support.

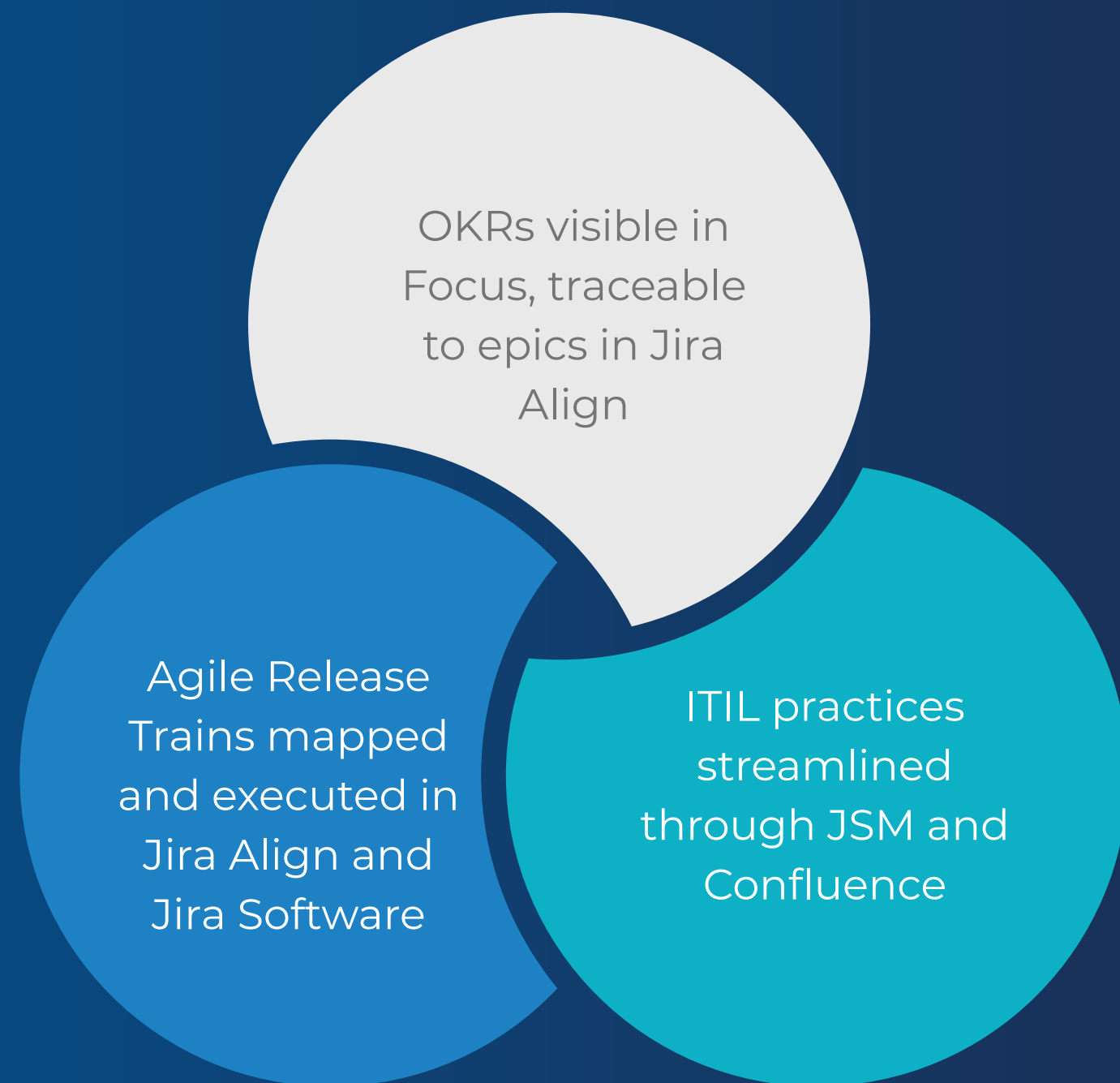
New Rule: Build cross-functional, knowledge-driven service operations.

Atlassian System of Work for ITSM:

- **Jira Service Management:** Rapid, flexible request handling
- **Confluence:** Knowledge base integration
- **AI agents:** Auto-resolution of common issues
- **Connected workflows:** IT, security, dev, HR, and facilities working together



System of Work in Action:



Chapter 6:

Frameworks Come to Life

Old Way:

Frameworks like OKRs, SAFe, and ITIL stayed theoretical.

New Rule:

Embed frameworks into the daily flow of work.

Conclusion:

Your Blueprint for Better Work

Success today demands more than collaboration—it demands a living, breathing System of Work.

The Atlassian System of Work empowers organizations to:

- Align work to strategy in real time
- Accelerate decision-making and execution
- Empower employees with knowledge and AI
- Deliver high-velocity service management

At Oxalis, we specialize in bringing this system to life for complex enterprises.

Ready to unlock the new rules of teamwork?
Contact Oxalis and start your System of Work journey today.

[CONTACT US](#)

